

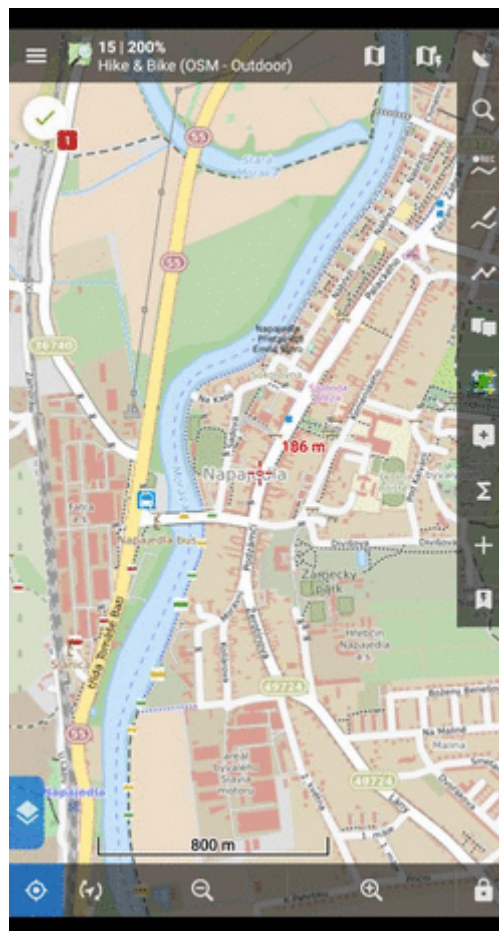


Quick bookmark

- This feature is available in Locus Map Pro only.


About

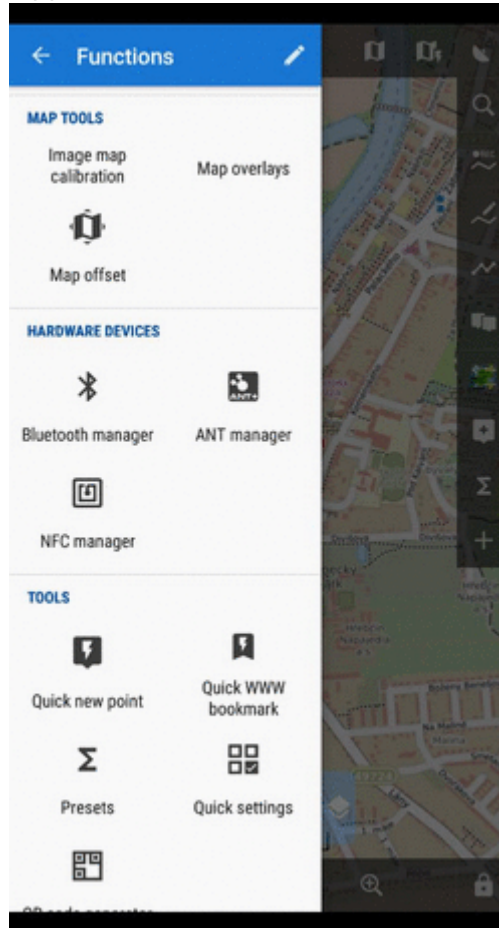
With this feature you can **transfer yourself quickly from a location in Locus Map to the same location on a map website or application**. For example for downloading tips for trips. Just tap the selected bookmark:



Pre-set bookmarks

For a quick start, there are a few pre-set bookmarks. To activate one, do following:

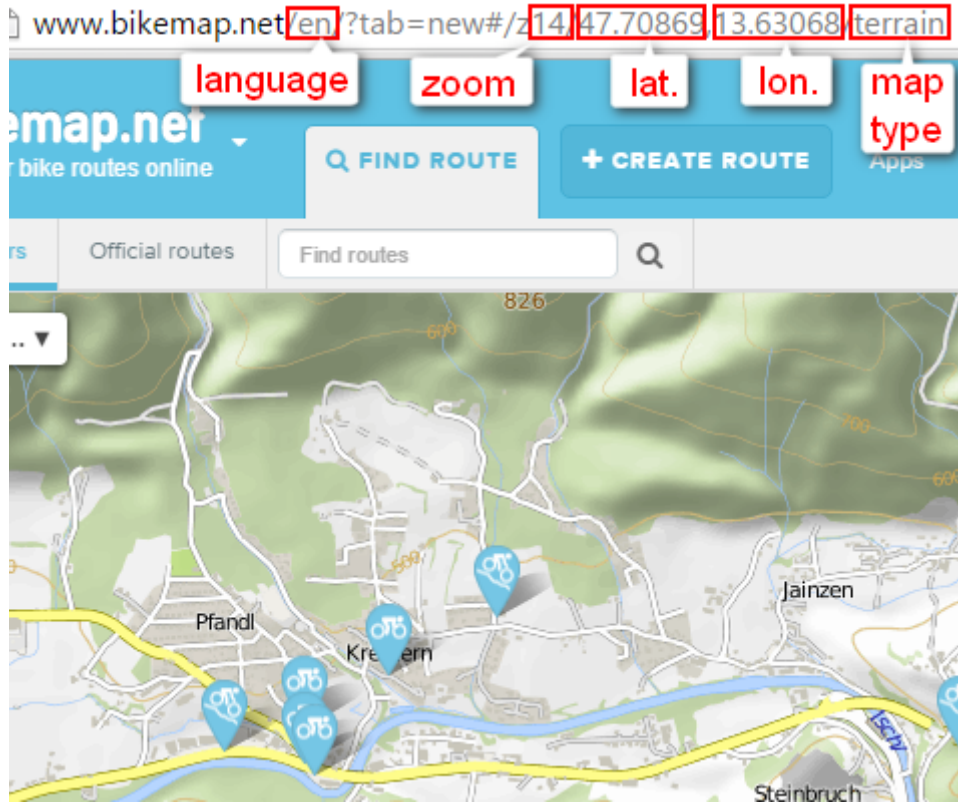
- go to Locus menu > More functions > Quick bookmarks
- tap  button to add a new bookmark
- select **Predefined**, a list of “favorites” emerges
- tap a bookmarked website or app and close the list. The bookmark is ready for use:




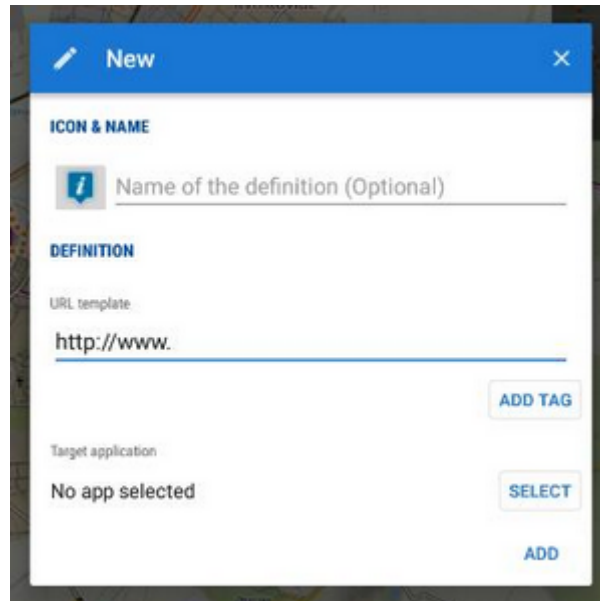
Get your own bookmark

As there are many map websites and apps and each of them uses a different structure of their parametrized URL, there is not a single universal instruction on how to set up this function. For better understanding what this function is about, we will present a **demo setup** made on a well-known track database [Bikemap.net](https://www.bikemap.net)

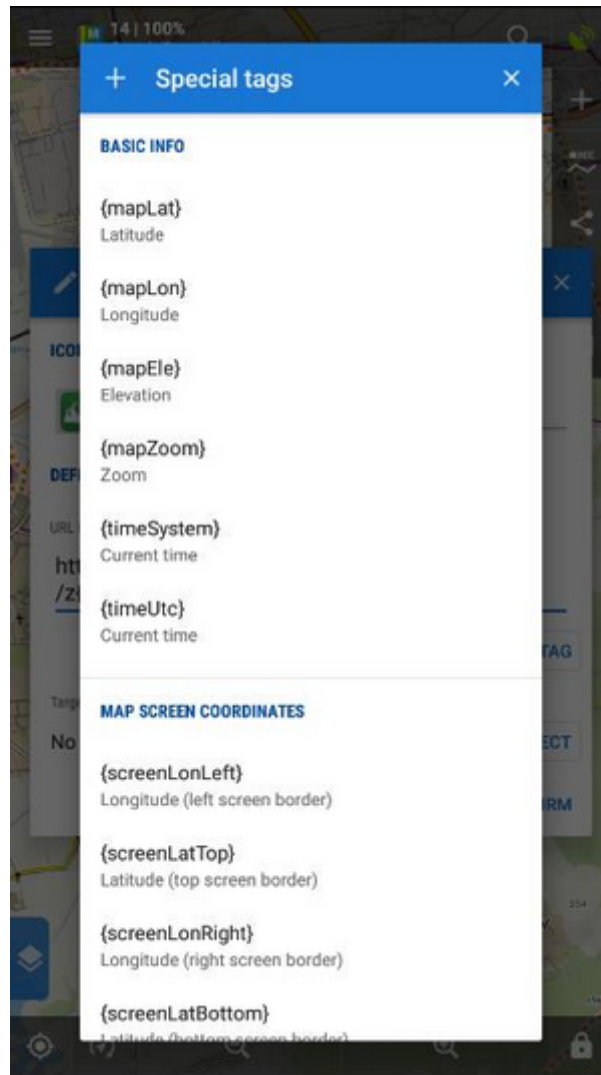
1. have a look at the structure of the **website URL** that leads to the map display. It consists of the main domain name **www.bikemap.net**, **language** parameter, **zoom** parameter, **latitude**, **longitude**, **map type** parameter and the rest:



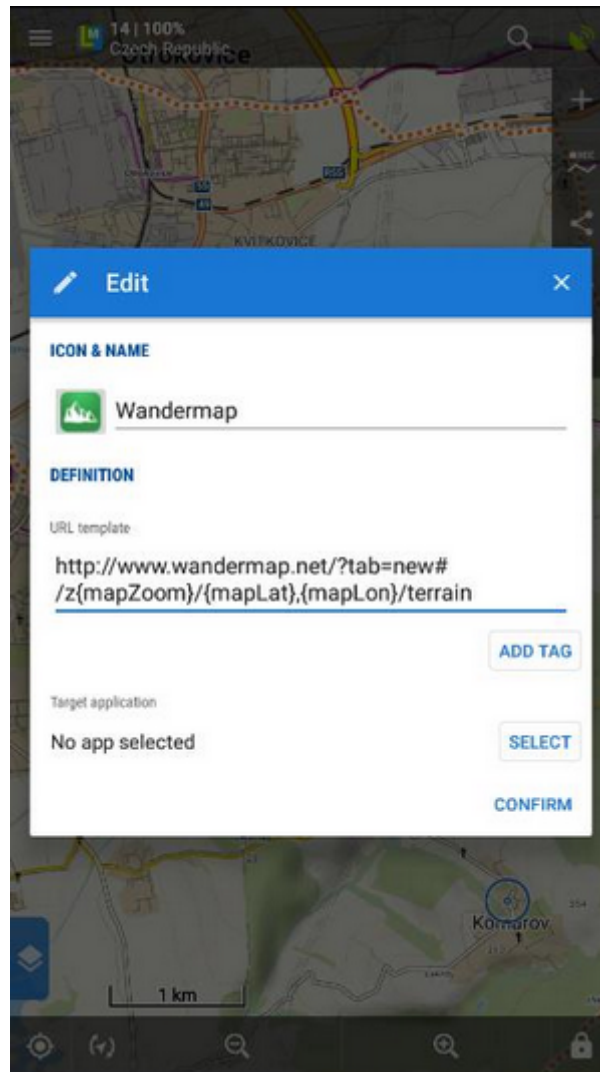
2. tap  button and select **Add new...**



3. insert the name and compose the **URL template** according to the **website URL**, using **ADD TAG** button for the variables:



In case you want to specify the app in which you want to open the URL, **open the app selection and choose the app**. The final setup will be like this:



The URL syntax must be preserved or the feature will not work!

4. **Confirm**
5. your bookmark emerges in the list

From:
<https://docs.locusmap.eu/> - **Locus Map - knowledge base**

Permanent link:
https://docs.locusmap.eu/doku.php?id=manual:user_guide:functions:quick_bookmark

Last update: **2020/03/18 12:38**

