

Data Import

About

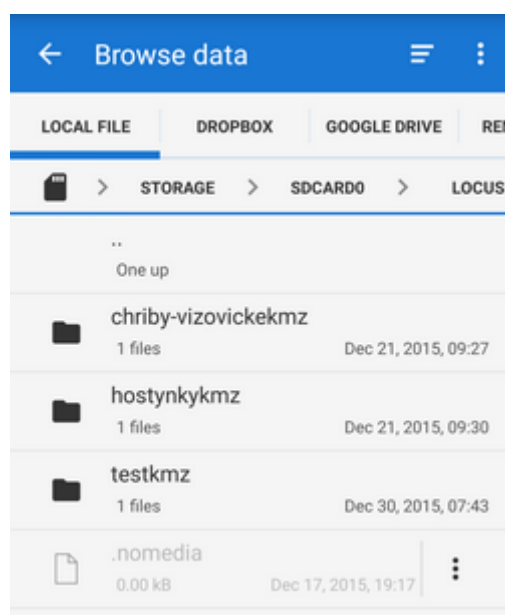
- [Menu > Data Import](#)

Data import is used when you want to work with **tracks** and **points** from external sources - websites, file folders, databases, applications, add-ons etc. This function is a general place where to start importing. Otherwise there are many other spots where the import can be launched from, depending on the content you want to import - **points** or **tracks**.

- [more about points import >>](#)
- [more about tracks import >>](#)

Locus Map file manager

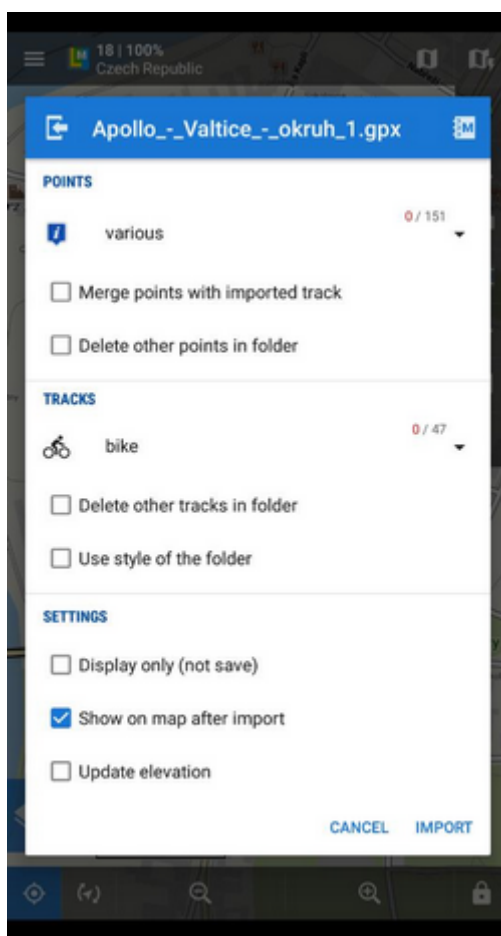
When selecting the Data Import function, Locus Map opens a **file manager** window displaying three tabs where to choose files to import. Importable files are in full color and are clickable. [More about supported formats](#) see in [points/tracks dedicated import chapters](#).



- **Local file tab** - directory structure of your device memory. Importable files are usually stored in SDCARD folder.
- **Dropbox tab** - directory structure of your Dropbox folder
- **Remote file tab** - contains socket for inserting URL of a remote file stored in an Internet repository (Rapidshare, Mega, Mediafire etc.)

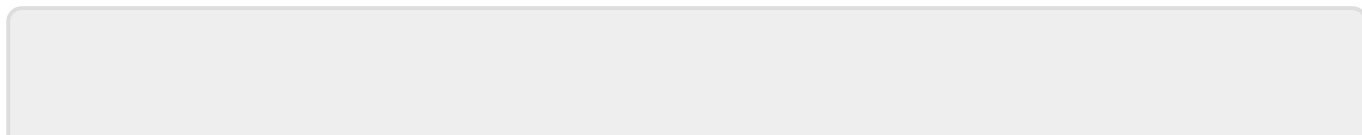
Import dialog

After selecting the file Locus Map analyses it and modifies the import dialog according to the content - the dialog can process points or tracks or both of them at once.



- [More about the points part of the import dialog >>](#)
- [More about the tracks part of the import dialog >>](#)

After pushing the **Import button** the imported points appear in the selected folder of the **Data manager Points tab**, respectively tracks in the **Tracks tab**. Depending on whether the option *Display on the map after import* was checked the imported data appear on the map as well.



From:

<https://docs.locusmap.eu/> - **Locus Map - knowledge base**

Permanent link:

https://docs.locusmap.eu/doku.php?id=manual:user_guide:functions:data_import&rev=1446819318

Last update: **2015/11/06 15:15**

