



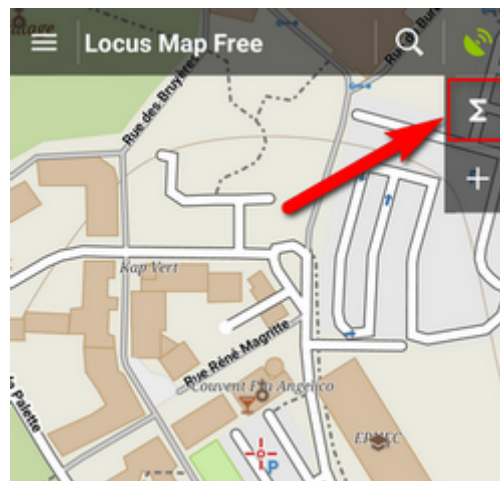
# Presets

---

Locus Map is a very **universal app** - it can be set for **many various activities**, and not only the leisure time ones - it can also navigate in car or help professionals collect geo data or locate targets for rescue squads. This versatility and vast range of features, however, has its drawbacks - using Locus for more activities means a lot of re-setting. Speaking of adjustments to your screen layout, changing type of navigation recalculation, switching vector map themes, increasing map resolution etc.

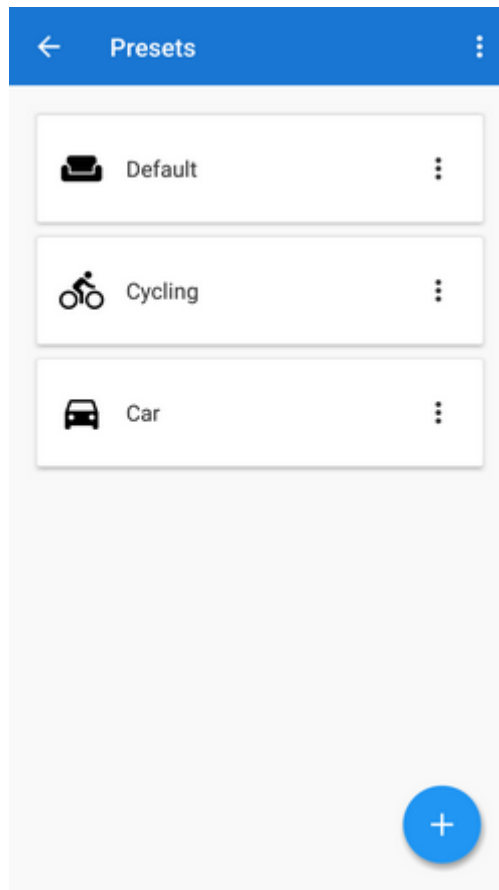
**With Presets you can reset whole Locus with two taps.**

Using Presets requires some setting in the beginning - above all, we recommend **putting Presets button in the function panel**:



## Pre-defined Presets

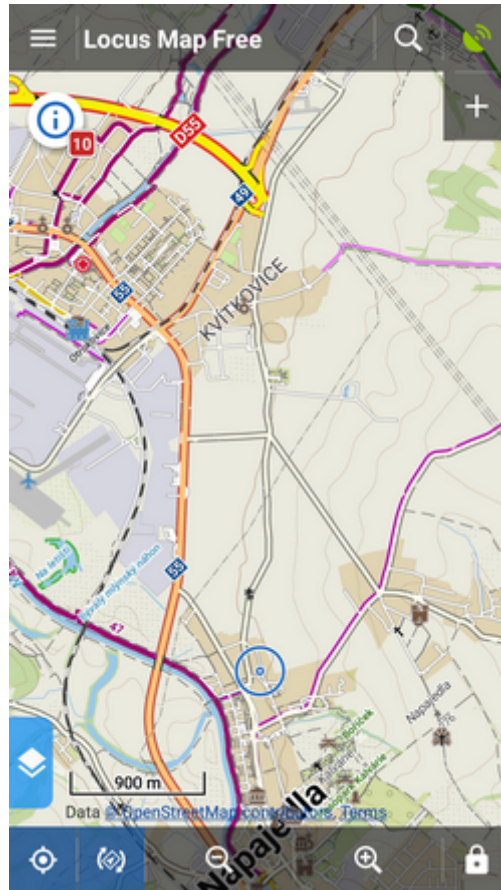
When tapping Presets for the first time there are **three pre-defined Presets**:



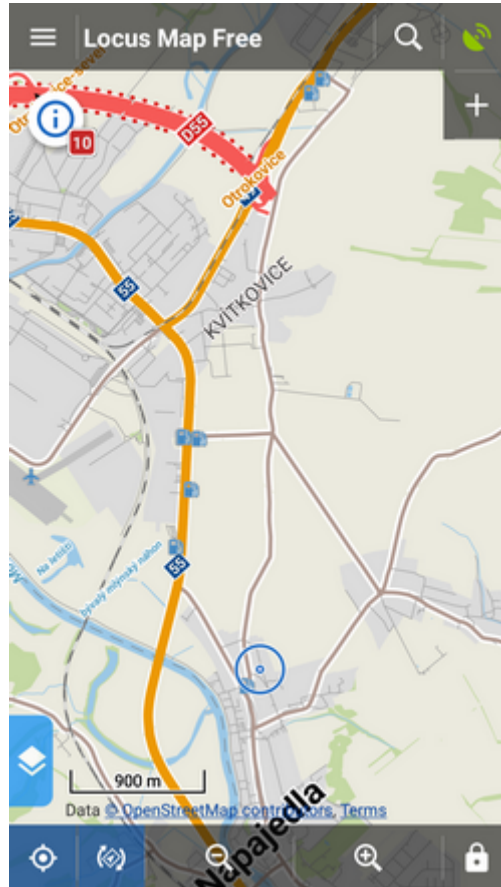
- **1. Default** - contains app settings after the first Locus start with just map centering on



- **2. Cycling** - map rotation on, location cursor moved to lower 1/3 of the screen, map centering on, hike/bike map theme on




- **3. car** - map rotation on, location cursor moved, target-priority auto recalculation on, road theme of maps etc.



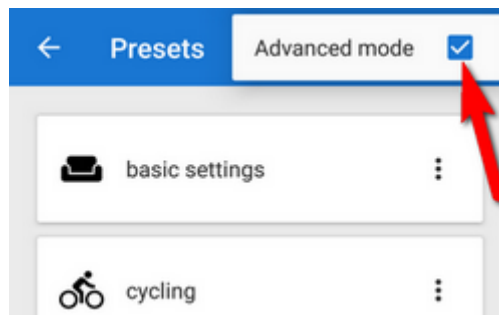
**A Preset is activated by tapping it.**

## Adding new Presets

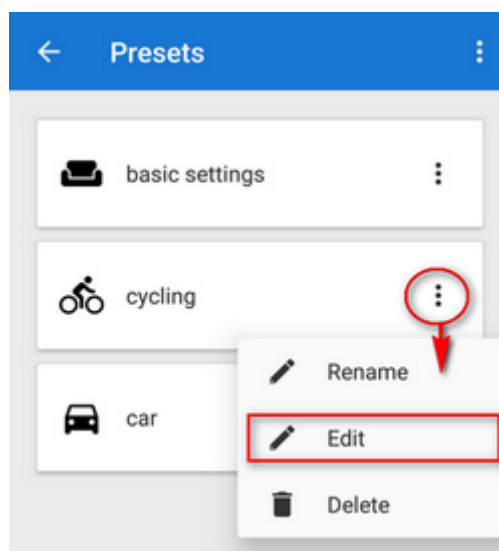
If you want to add another Locus Preset, just save your current Locus settings by tapping  in the bottom right part of the Preset box. Then just **rename the new preset**.

## Editing Presets

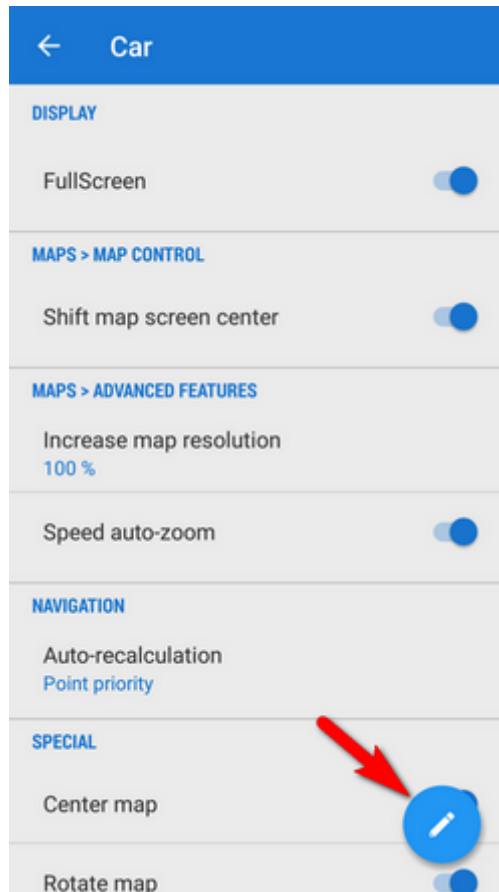
If you are an experienced Locus user you can get to re-setting of the default presets - check "**Advanced mode**" in the topbar.




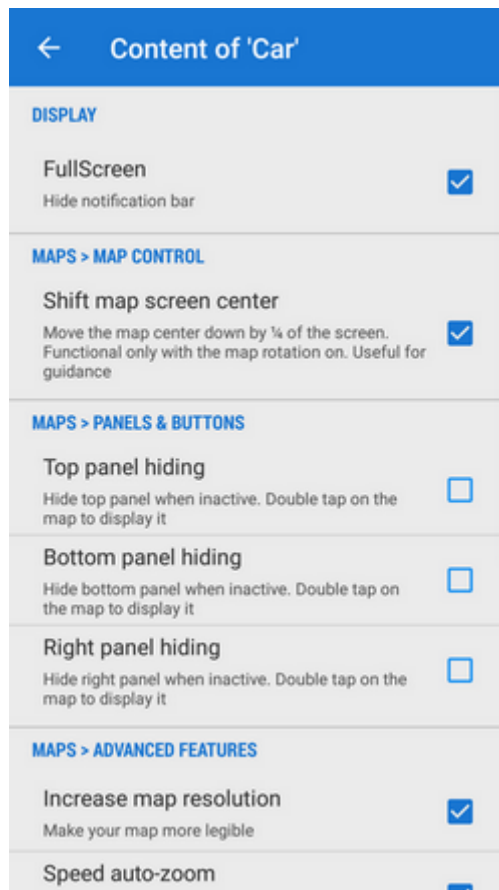
Option to **edit** is activated in each preset action menu:



tapping it gets you to the preset switch box:



By tapping the blue  button in the bottom right corner you get to the preset settings selection menu:



- - setting is **added** to the preset switch box
- - setting is **NOT added** to the preset switch box
- **going back from the menu confirms you selection**



Presets do not contain all settings options Locus normally offers. There are only the most used preferences that resulted from a user survey.

From: <https://docs.locusmap.eu/> - Locus Map Classic - knowledge base

Permanent link: [https://docs.locusmap.eu/doku.php?id=manual:user\\_guide:settings:presets&rev=1584601347](https://docs.locusmap.eu/doku.php?id=manual:user_guide:settings:presets&rev=1584601347)

Last update: 2020/03/19 07:02

