

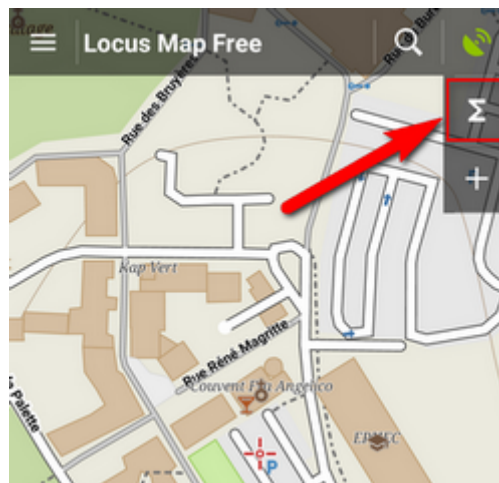


Presets

Locus Map is a very **universal app** - it can be set for **many various activities**, and not only the leisure time ones - it can also navigate in car or help professionals collect geo data or locate targets for rescue squads. This versatility and vast range of features, however, has its drawbacks - using Locus for more activities means a lot of re-setting. Speaking of adjustments to your screen layout, changing type of navigation recalculation, switching vector map themes, increasing map resolution etc.

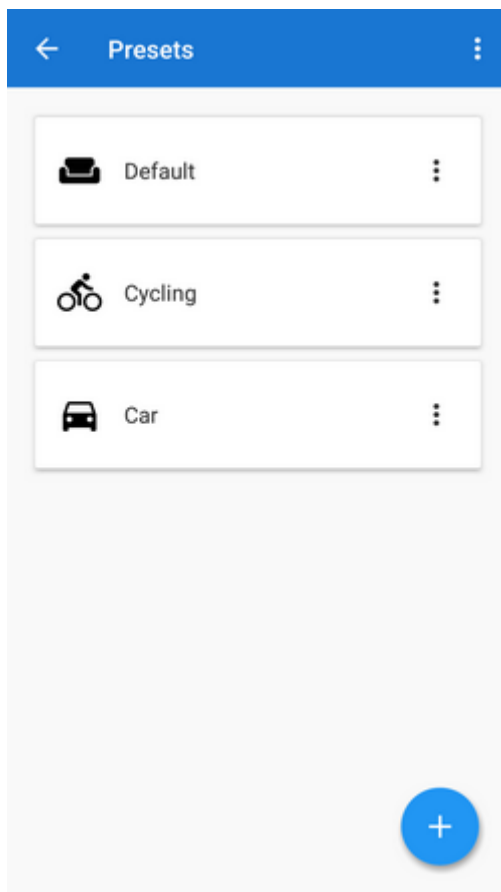
With Presets you can reset whole Locus with two taps.

Using Presets requires some setting in the beginning - above all, we recommend **putting Presets button in the function panel**:



Pre-defined Presets

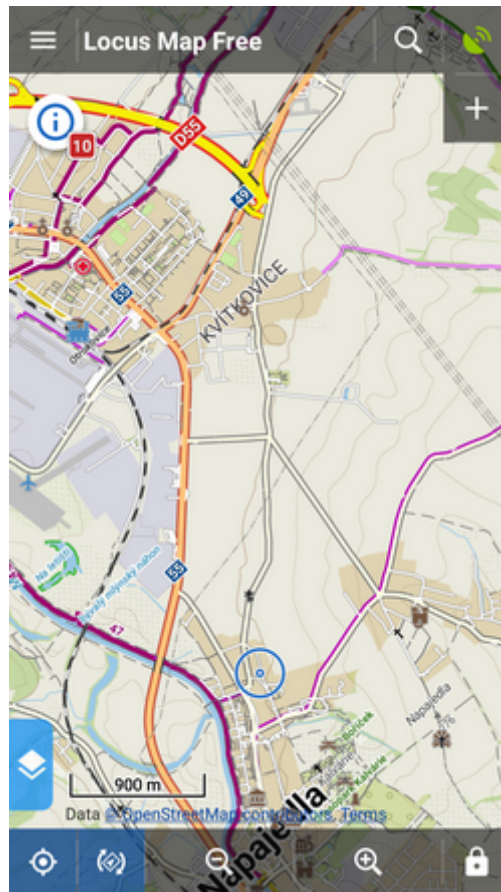
When tapping Presets for the first time there are **three pre-defined Presets**:



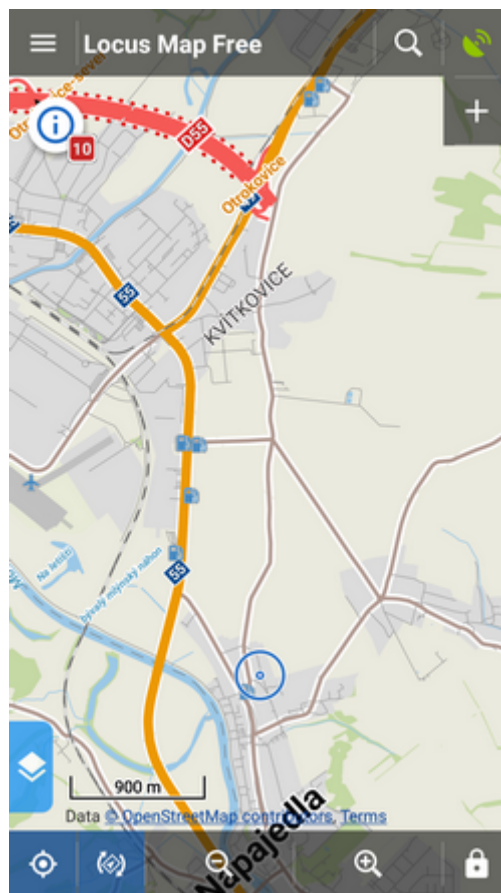
- **1. Default** - contains app settings after the first Locus start with just map centering on



- **2. Cycling** - map rotation on, location cursor moved to lower 1/3 of the screen, map centering on, hike/bike map theme on




- **3. car** - map rotation on, location cursor moved, target-priority auto recalculation on, road theme of maps etc.



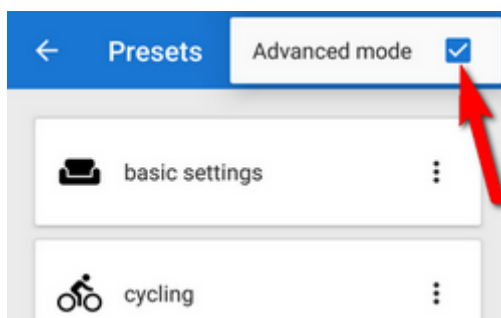
A Preset is activated by tapping it.

Adding new Presets

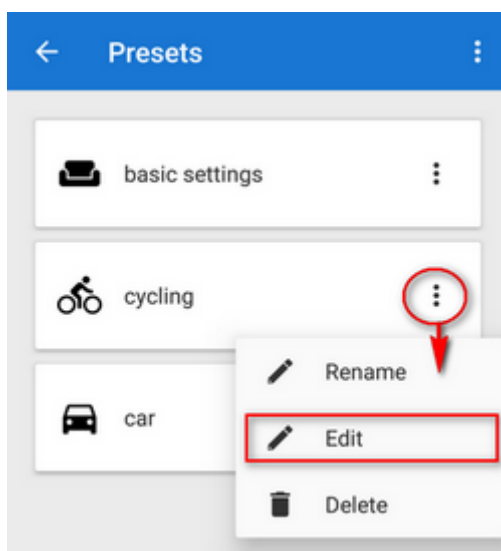
If you want to add another Locus Preset, just save your current Locus settings by tapping  in the bottom right part of the Preset box. Then just **rename the new preset**.

Editing Presets

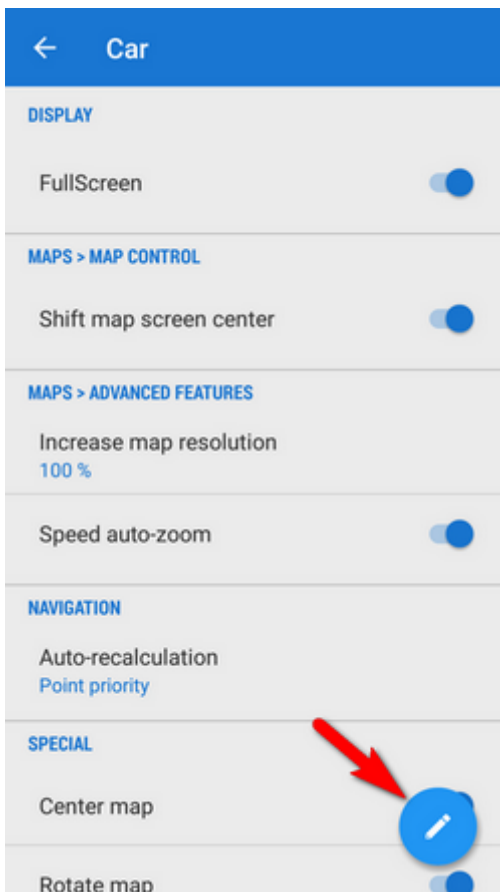
If you are an experienced Locus user you can get to re-setting of the default presets - check "**Advanced mode**" in the topbar.




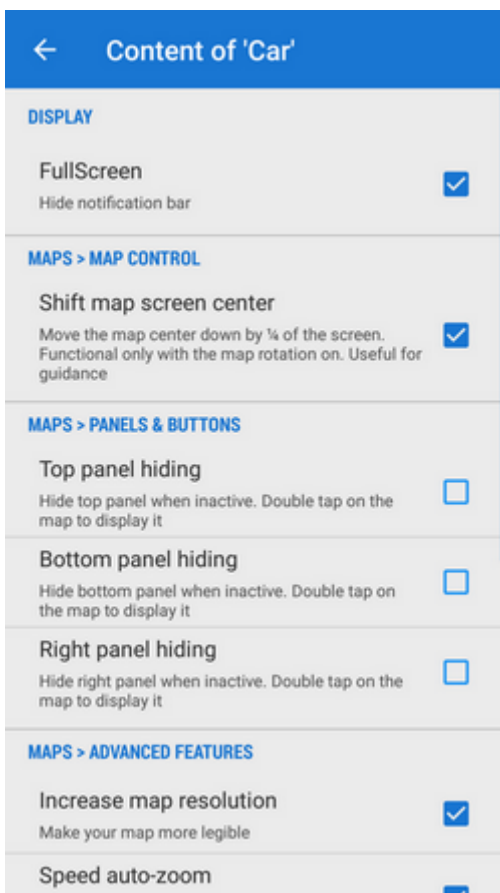
Option to **edit** is activated in each preset action menu:



tapping it gets you to the panel of settings switches:



By tapping the blue  button in the right you get to the preset settings selection menu:





Presets run in BETA mode so far and they do not contain all settings options Locus normally offers. There are only the most used preferences that resulted from a user survey.

From: <https://docs.locusmap.eu/> - **Locus Map Classic - knowledge base**

Permanent link: https://docs.locusmap.eu/doku.php?id=manual:user_guide:settings:presets&rev=1495537946

Last update: **2017/05/23 13:12**

