

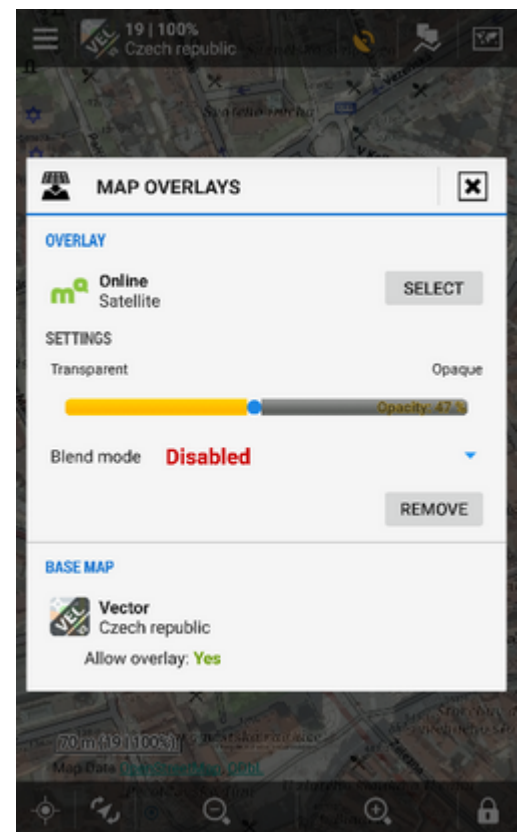


# Map Overlays

## About

- Menu > More > Map Overlays

This feature enables laying **two maps over each other** in semi-transparent mode so that it is possible to compare their details, coverage, accuracy etc. This option is available only to Locus Map Pro users.



## 1. Select your background map

Choose from your map portfolio:

- *Online maps*
- *Personal maps*
- *Locus Maps*

## 2. Select your overlay map

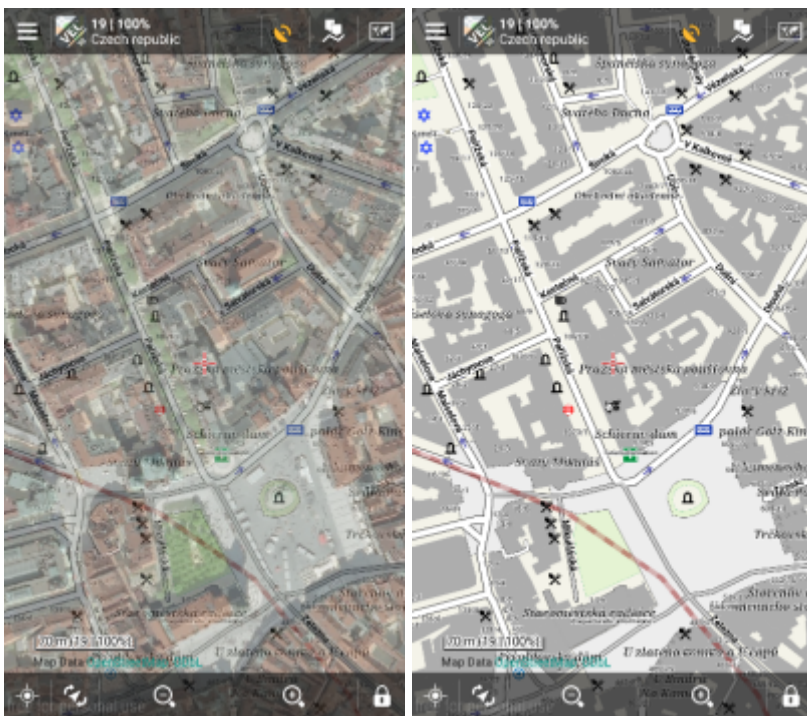
Select the function in *Menu > More > Map Overlays*. Again you can choose any map available in the **Maps Manager**.

## 3. Set opacity and blend mode

- Adjust *opacity* with the *slider* from opaque to transparent.
- Select *blend mode* of the two maps if necessary. The option can be *disabled*.
- Close the dialog and enjoy your two maps overlaid.
- If you want to switch the function off, tap *Remove* and close the window

## Example

Locus Maps center of Prague with and without satellite image map overlay:



From: <https://docs.locusmap.eu/> - Locus Map Classic - knowledge base

Permanent link: [https://docs.locusmap.eu/doku.php?id=manual:user\\_guide:maps\\_tools:overlays&rev=1428654564](https://docs.locusmap.eu/doku.php?id=manual:user_guide:maps_tools:overlays&rev=1428654564)

Last update: 2015/04/10 10:29

