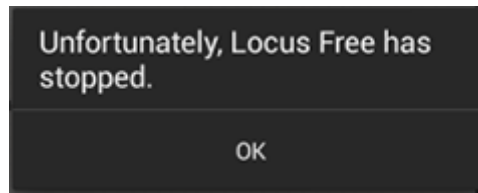


Locus Map Crash

When the application unexpectedly stops or closes down and a crash pop-up window is displayed...:



What to do?

1. Try to **repeat the error action** at least once more.
2. **Describe precisely the steps that lead to the crash** and write them down step by step. Please describe the procedure in tiniest detail so that we can repeat the steps you have taken - **simulate your problem**.
3. Try to create an **error message/log** - see [Creating Logs >>](#) (a log is essential for error correction)
4. Contact us at support.locus@asamm.com and **send all to us** - thorough description of the problem, error log, all files or maps involved in the issue

A part of Locus apparently does not work

One of Locus features does not work properly, or does not work at all.

What to do?

1. Try to **repeat the error action** at least once more.
2. **Describe precisely the steps that lead to the issue** and write them down step by step. Please describe the procedure in tiniest detail so that we can repeat the steps you have taken - **simulate your problem**.
3. Try to create an **error message/log** - see [Creating Logs >>](#) (a log is essential for error correction)
4. Contact us at support.locus@asamm.com and **send all to us** - thorough description of the problem, error log (if possible), all files or maps involved in the issue

Something doesn't work as it should but maybe I just need more information

In this case please follow [these instructions >>](#)

From:

<https://docs.locusmap.eu/> - **Locus Map Classic - knowledge base**

Permanent link:

https://docs.locusmap.eu/doku.php?id=manual:faq:issue_reporting&rev=1431980459

Last update: **2015/05/18 22:21**

