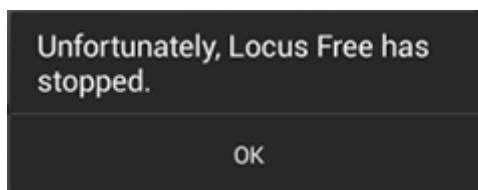


Locus Map Crash

When the application unexpectedly stops or closes down a crash pop-up window is displayed:



What to do?

1. Try to repeat the error action once more.
2. Describe the steps that lead to the crash. Please describe the procedure in detail so that we can repeat the steps you have taken.
3. Try to create an error message/log - see [Creating Logs >>](#) (a log is essential for error correction)
4. Contact us at support.locus@asamm.com

A part of Locus does not work

One of Locus features does not work properly, or does not work at all.

What to do?

1. Try to repeat the error action once more.
2. Try to create an error message/log - see [Creating Logs](#)
3. Please try to describe precisely, which feature does not work properly and what are the symptoms.
4. Contact us at support.locus@asamm.com

Contact us

1. Describe your problem - see previous steps
2. Attach log (if possible)
3. [Create new request](#)

From:
<https://docs.locusmap.eu/> - Locus Map Classic - knowledge base

Permanent link:
https://docs.locusmap.eu/doku.php?id=manual:faq:issue_reporting&rev=1430318437

Last update: **2015/04/29 16:40**

