

How to create an error message/log

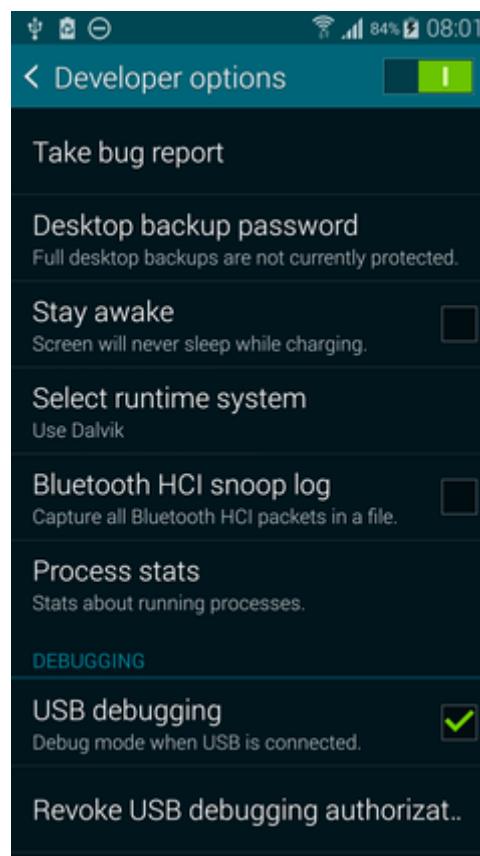
Logs are the best way for us to find out what causes your problems with the application. Creating an error message/log varies according to the version of Android.

Devices with Android 4.2 and higher

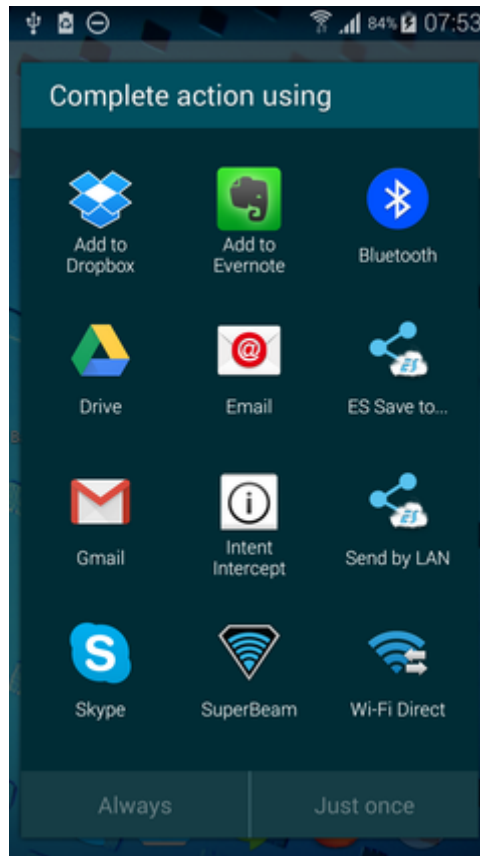
Devices with Android version 4.1.2 and higher provide error messages that can be sent directly to us via email.

Please follow these instructions:

1. Open the settings of your device and make sure you can access “Developer Options”. In case that you do not see this option in the settings list, please follow the instructions [here >>](#).
2. Repeat the action in Locus that causes the crash
3. Move to the above-mentioned “Developer Options” in the settings of your device
4. Enable USB debugging
5. Select **Take Bug Report**



6. Wait a few minutes for the report to be created (it may take up to 15 minutes)
7. the log report should appear in your notification bar. From there (or from “Developer options”), you may send it via email to locus.map@asamm.com or better, upload to a Dropbox/Google Drive and share it with us (reports can be bigger than 15 MB and then they are not correctly attached to email!).

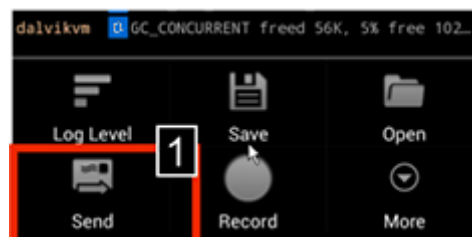


Android 7.0+

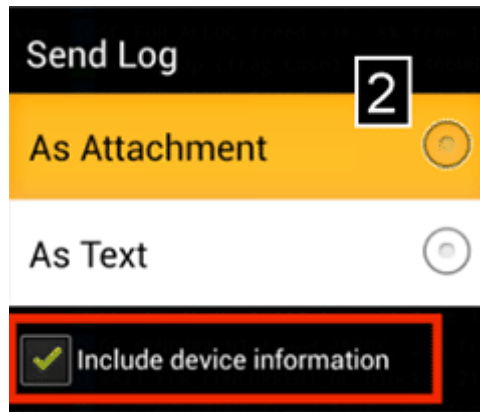
After tapping “Take bug report” you are offered two types of report - Interactive and Full. **Select Interactive.**

All devices with Android OS older than 4.1

1. Please install the **CatLog** application (available on the Google Play for free)
2. Start Locus
3. Repeat the action in Locus you want to report. If the Force close or dialogue appears, select “Close”
4. Start CatLog application and wait a few seconds.



5. Move to the CatLog application Menu > Send [1]
6. Add the attachment [2] and include the device information



7. Please describe in detail the problem in Locus
8. Please send us the log to locus.map@asamm.com

Catlog can be used also on newer Androids but requires root access.

MIUI ROMs

MIUI 7 and older

1. install the **CatLog** application (available on the Google Play for free)
2. go to *Security > Permissions > Root access > Allow root access to CatLog*
3. go on the same way as in case of devices with Android OS older than 4.1

MIUI 8

1. tap `***#284***` on your phone dial
2. copy the bugreport from your memory directory `sdcard/miui/bugreport`

General solution for all Android versions

Instructions below are used for creating a detailed log but the procedure is more complicated.

1. Download **ADB installer**
2. Run it
3. Press Y/Yes to install ADB and Fastboot or N/No to skip
4. Press Y/Yes to install ADB system-wide or N/No for current user only
5. Press Y/Yes to install Drivers or N/No to skip
6. Continue Driver installation
7. launch the **command line** WIN+R > CMD > Enter
8. connect your phone with the PC via USB
9. repeat the error action
10. input **adb bugreport > c:/Users/myusername/locus_log.txt** in the command line
11. press Enter
12. wait until the bugreport is done
13. **zip the bugreport** (it's huge - over 30 MBs) **and send it to locus.map@asamm.com**

Is this article useful for you? Please rate it:

{(rater>id=1|name=faq_how_to_create_debug_log|type=rate|headline=off)}

From:

<https://docs.locusmap.eu/> - Locus Map Classic - knowledge base

Permanent link:

https://docs.locusmap.eu/doku.php?id=manual:faq:how_to_create_debug_log&rev=1502876487

Last update: **2017/08/16 11:41**

