



How to place a point of interest on the map?

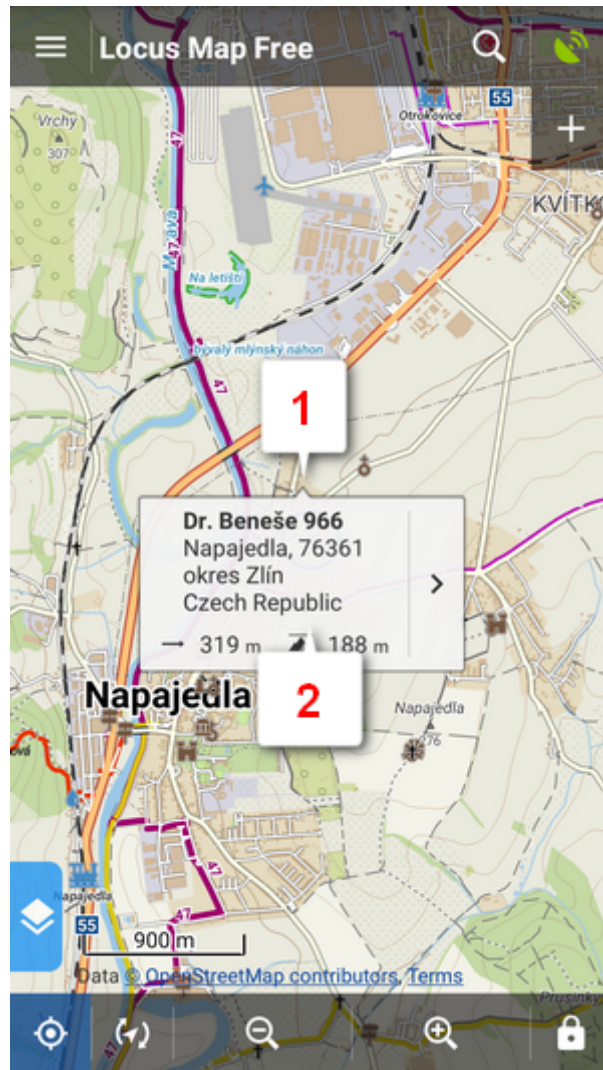
BTW, what is a point of interest, a.k.a. POI?




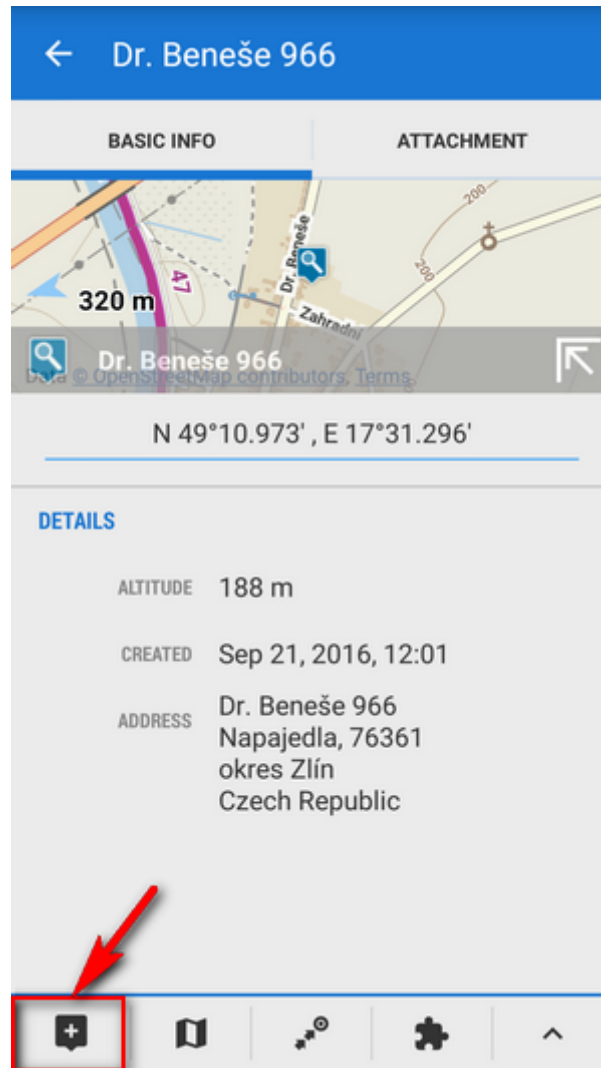
POIs are places on the map that carry some more information you are interested in. **Just tap them.** Usually they describe things like **monuments, theaters, museums, pubs, hotels** etc.

Locus Map allows you to place **your own POI** to mark anything you like on your trip, to show your friends your address on holidays or to let yourself navigate to it. It's simple:

- **1.** touch the screen on the place you'd like to save and hold a sec. A small frame with address appears. **2.** tap it once more to open the POI detail window.



- tap  in the left lower corner.



- edit name of your point or just leave what is in the place of name and tap **Save**.

Edit ✓ **SAVE** ⋮

BASIC INFO | **ATTACHMENT**

ICON & NAME
i Dr. Beneše 966 *

FOLDER
i various * 0 / 31

LOCATION
N 49°10.973' , E 17°31.296' * ⦿

DESCRIPTION
Description *

ELEVATION
188.087 * m GET

ADDRESS

STREET
Dr. Beneše 966 *

CITY
 *

*all these items can be edited

POIs are listed in the  Points manager.



← Data ⋮		
POINTS	TRACKS	ITEMS
i caches	0 / 409	⋮
castles	0 / 8	⋮
photos	0 / 10	⋮
i various	0 / 31	⋮



More about **Points** in Locus Map can be found [here >>](#)

Is this post useful for you? Please rate it:

{(rater>id=1|name=basics_poisplace|type=rate|headline=off)}

From:

<https://docs.locusmap.eu/> - **Locus Map Classic - knowledge base**

Permanent link:

<https://docs.locusmap.eu/doku.php?id=manual:basics:poisplace&rev=1486390946>

Last update: **2017/02/06 14:22**

