



Point alert

What is it for?

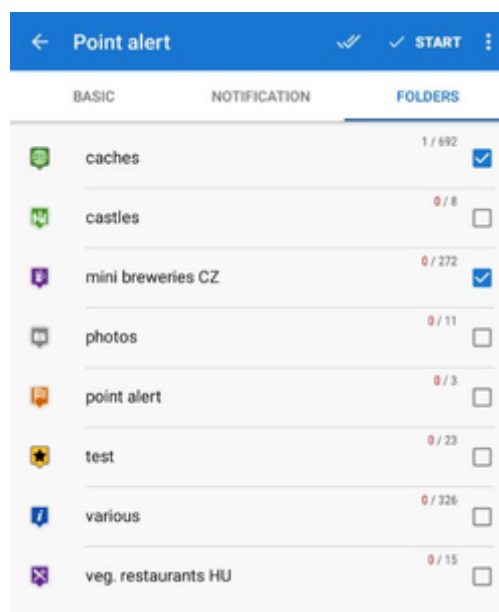
This feature **notifies** you (with beeping, a custom sound, vibration or a voice phrase) **when a point from a selected folder** of your user points **is nearby** (in the defined distance). Thanks to it, you don't have to check on the map all the time for geocaches near your hiking route, for example.

Point alert does not notify of [LoPoints](#).

How to set it up?

1. Select points

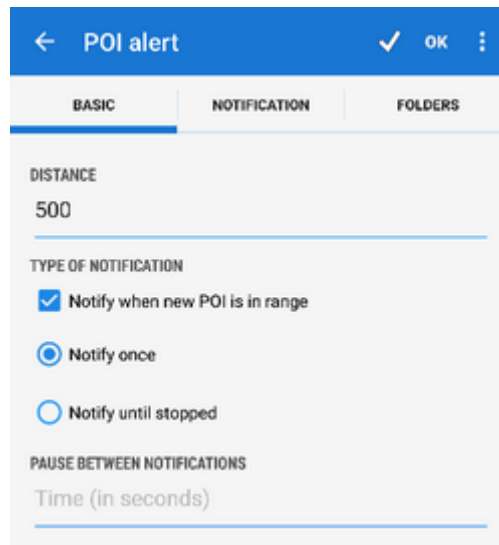
- open **Folders** tab:



- check the **folder with points** you want to be **notified of**

2. Set distance and alarm frequency

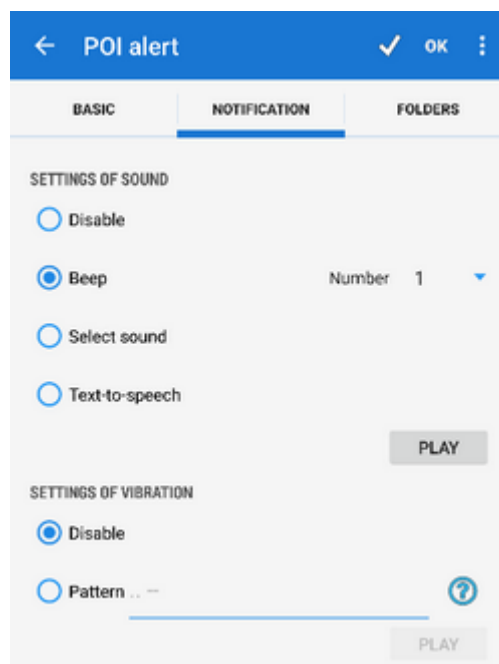
- open **Basic** tab:



- **Distance** - set how far from the selected point Locus starts the alert
- **Notify when point is in range** - check to switch sound/vibration notifications on/off (visual notification on map stays on)
- **Notify once** - the alert goes on only once
- **Notify until stopped** - notification repeats in defined interval until stopped manually (red STOP button on screen) or when you're out of the alert distance.

3. Set type of notification

Open **Notification** tab:



Settings of sound

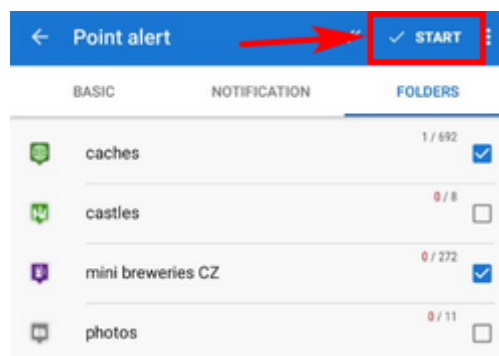
- **Disable** - all sounds are disabled, only screen and vibration alert work
- **Beep** - select number of beeps (1-10)
- **Select sound** - select any sound stored in your device memory
- **Text-to-speech** - enables voice prompts notifying of the name, distance, and direction of the point
Tap **Play** to check your sound settings.

Settings of vibration

Visible only when the vibrator is present (mainly in mobile phones)

- **Disable** - the device does not vibrate on notifications
- **Pattern** - set notification vibrating pattern, using three symbols: '.' for 200 milliseconds vibrations, '-' for 500 milliseconds vibrations and ' ' (space) for 500 milliseconds of silence.
Tap **Play** to check your vibration settings.

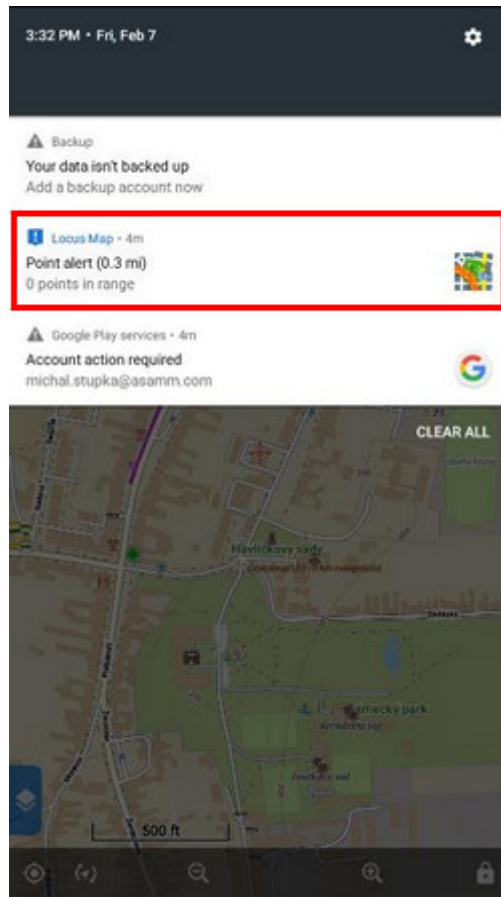
4. Tap START in the topbar



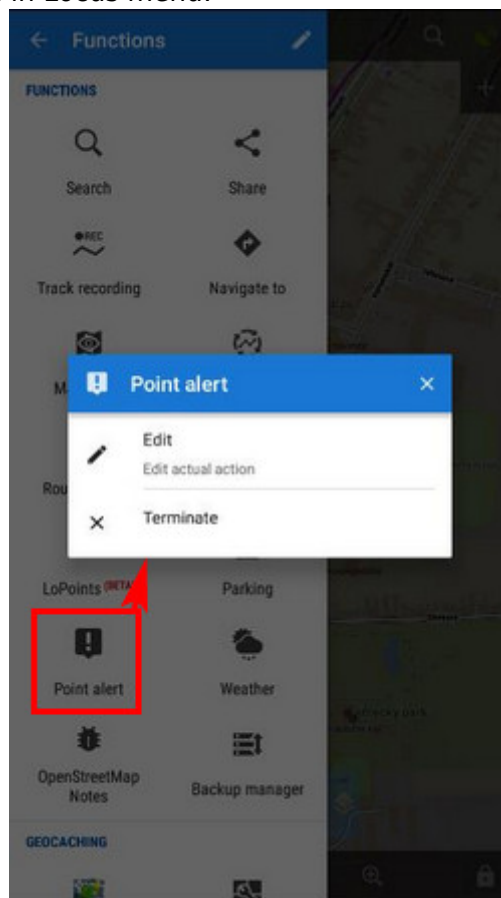
Setup change and point alert stop

Point alert setup can be changed anytime, even when the feature is running.

- scroll down your system toolbar and tap the point alert notification



OR tap the point alert button in Locus menu:



- select **Edit** - you can change distance, type of notification and point folders. Then tap START again for the changes to take effect.
- tap **Terminate** to stop the point alert

From:

<https://docs.locusmap.eu/> - **Locus Map Classic - knowledge base**

Permanent link:

https://docs.locusmap.eu/doku.php?id=manual:user_guide:functions:poi_alert

Last update: **2022/04/08 15:44**

