

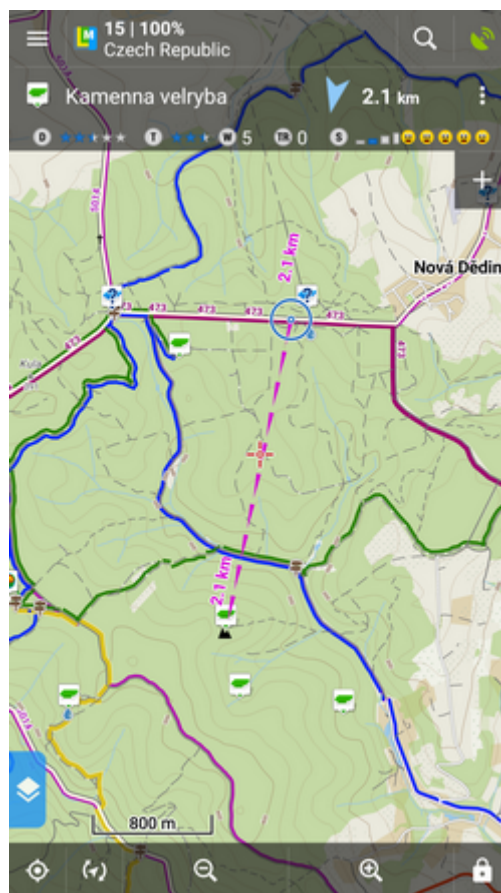


Guidance

Guidance To a Point

Off-road, beeline guiding to a selected place, independent on road network. Used especially for orientation in free terrain.

Typically useful for finding **geocaches** or directing towards **user point of interest** and **LoMap POI** (remote viewpoint, waterfall etc.):





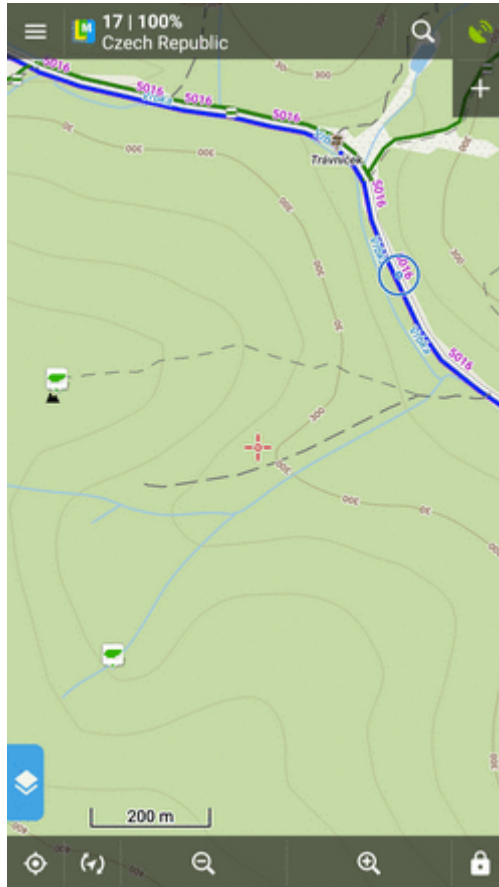
How to guide? Select target and start guiding to it from its action menu.

Select target and start

A particular point on map

- tap the point (LoMap POI, geocache...) on map

- tap  and then  **Guide On:**





Indefinite place on map

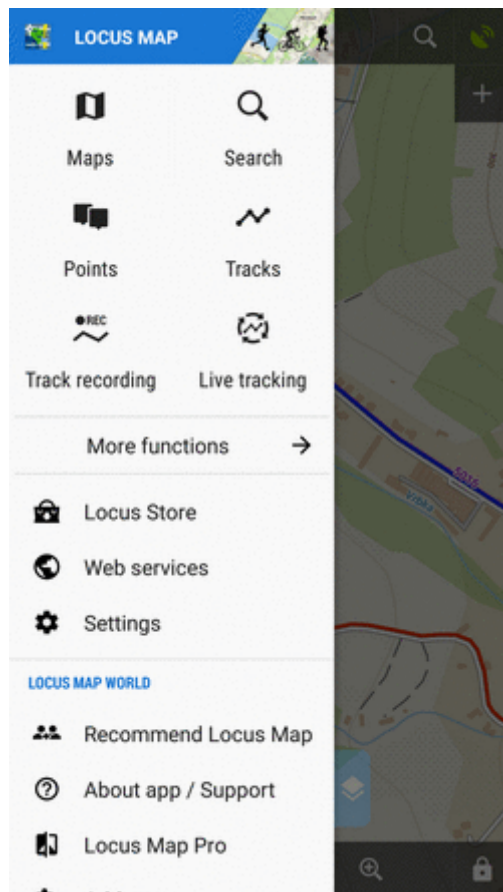
- long-tap a place on map
- a pop-up (usually with address) appears

- tap  and then  **Guide On:**



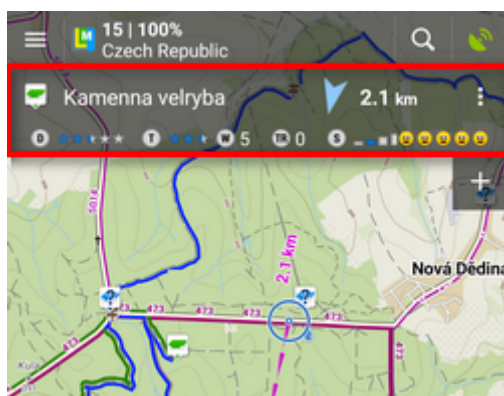
In Points manager

- go to **Menu > Points > folder > tap the selected point** and open its detail screen
- tap  in the bottom panel and select  **Guide On:**



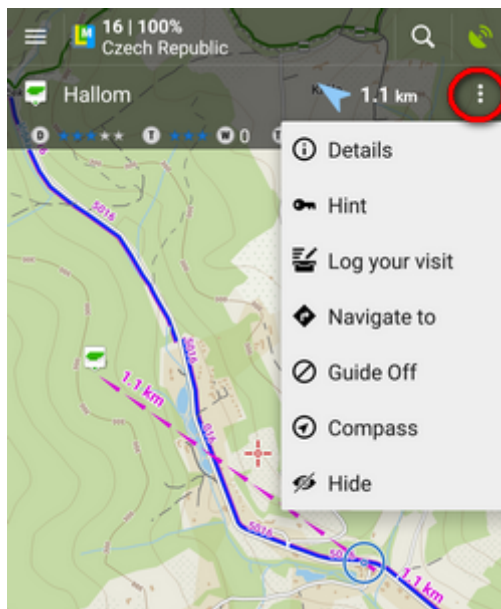
Controlling

Point guidance panel



It displays information about the point, its distance and direction. In case of guidance to a geocache there are also other facts like the cache type, difficulty and terrain. Tapping the panel displays the point detail screen.

Panel menu



- *Details* - opens screen with the point details
- *Hint* - in case of guidance to a geocache
- *Load all waypoints* - in case of guidance to a geocache with more waypoints
- *Navigate to* - switches to turn-by-turn navigation and calculates a route to the target
- *Guide Off* - stops guidance
- *Compass* - switches into [compass](#) view
- *Hide* - makes the point invisible on map

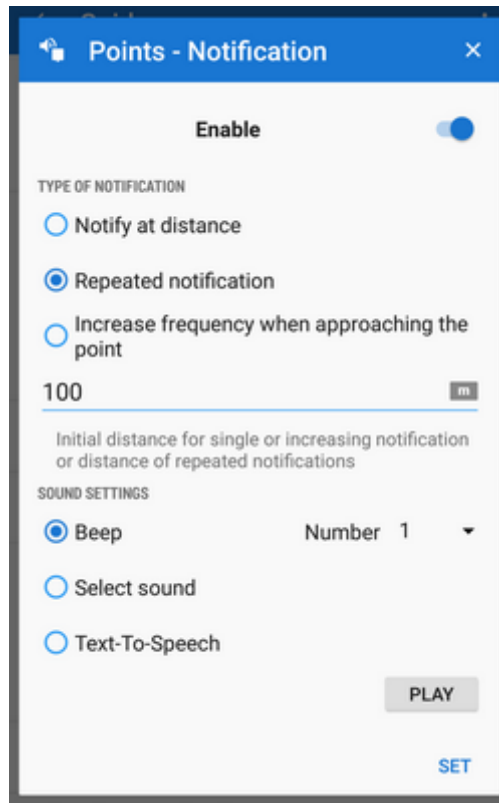
Target notifications

Locus can notify you of coming target several ways:

- **once in defined distance** from the point of guidance
- **repeatedly** after you reach defined distance
- **changes frequency of alerts** in dependance on your distance from the target (the faster the closer you are)

Settings

- go to **Menu > Settings > Guidance > Notification**
- Switch **Notification ON**
- Select notification **mode** - single alert, repeated or increased frequency alert
- Set the **distance** you want to be alerted at (or distance interval between repeated notifications).



First two options have further settings:

- **Settings of sound**

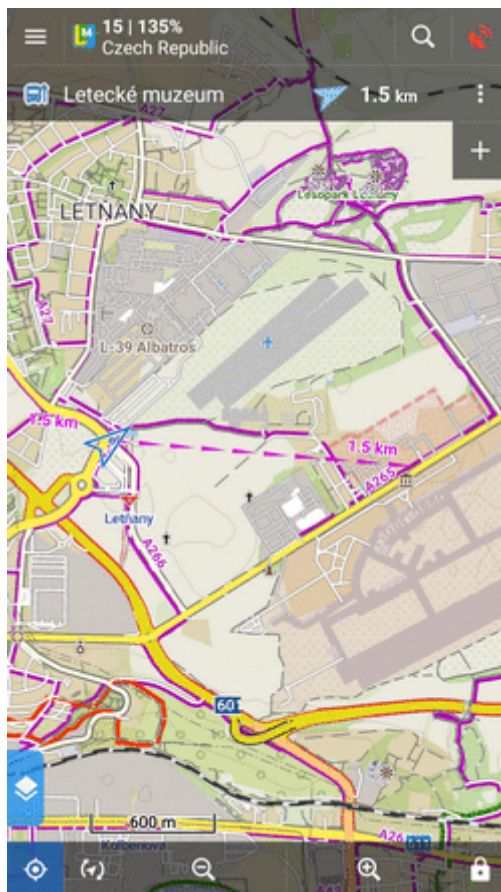
- *Disable* - all sounds are disabled, notification is made by the device screen and vibrator only
- *Beep* - it is possible to set number of beeps (1-10)
- *Select sound* - select from sounds stored in your device memory
- *Text-To-Speech* - voice notification informing about distance and direction of the point. Tap **Play** to check your sound settings.

- **Settings of vibration** - visible only when the device is equipped by a vibrator (mainly mobile phones)

- *Disable* - the device does not vibrate on notifications
- *Pattern* - sets notification vibrating pattern, using three symbols: '.' for 200 milliseconds vibration, '-' for 500 milliseconds vibration and ' ' (space) for 500 milliseconds of silence. Tap **Play** to check your vibration settings.

Automatic zooming

Locus can zoom the map **automatically according to the distance from the point** you are guided to - the closer the target is the bigger zoom is displayed so both your position and the target are visible on the map screen:



The option can be switched on in **Settings > Controlling > Map screen > Zoom according to speed**.

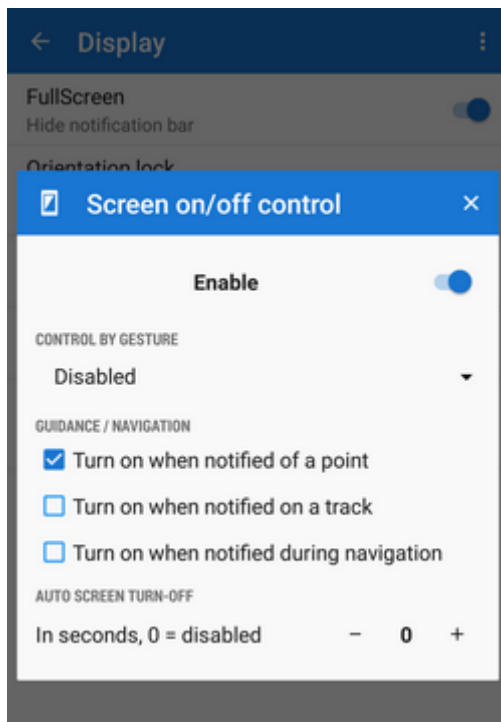


At first the function zooms according to your current speed, beginning at 2000 m from the target it switches to the distance-based zooming mode. Applicable only for guidance to a point (not along a route).

Automatic screen on

To save your battery energy you can set automatic screen turning-on. The screen lights up simultaneously with the sound notification.

You can set it up in **Settings > Controlling > Display > Screen on/off control**:



Guidance Along a Route

In other words **guidance to a chain of routepoints**:






You are guided to the first point of the route, then to the second etc. It is useful e.g. for **sailing, sea-**

kayaking, flying or crosscountry hiking when there are no roads for turn-by-turn navigation.





Select route and start

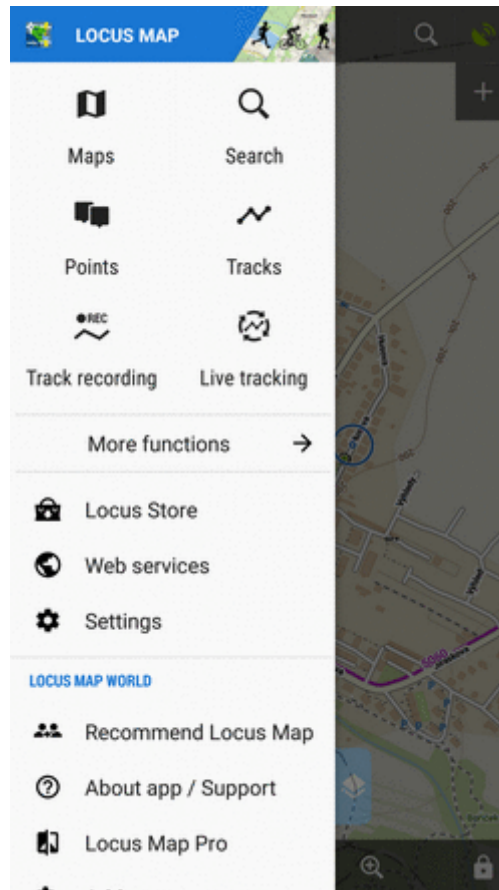
On map

- tap the route on map
- tap  and select  **Navigation/Guidance** from the popup menu
- tap  **Guidance** (check “Guide reversely” if you need guiding in reversed direction):



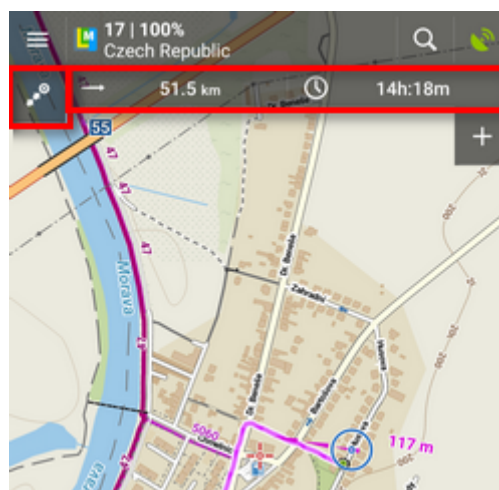
From tracks/routes manager

- go to **Menu > Tracks**
- tap the selected route folder and the selected track to display the detail screen
- bottom panel   **Navigation/Guidance** button   **Guidance** (check “Guide reversely” if you need guiding in reversed direction):




Controlling

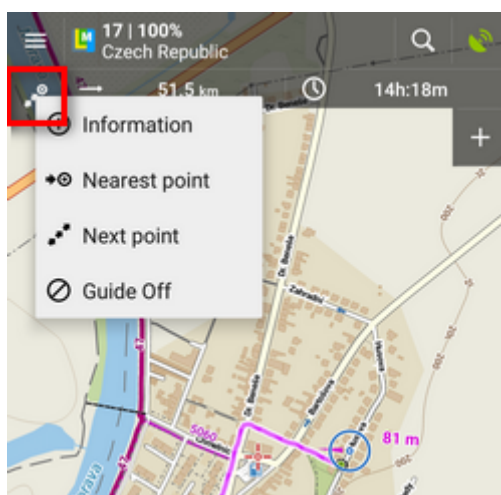
Route guidance panel



Appears when guidance is started. Consists of three sections:

-  Action menu
- two information fields

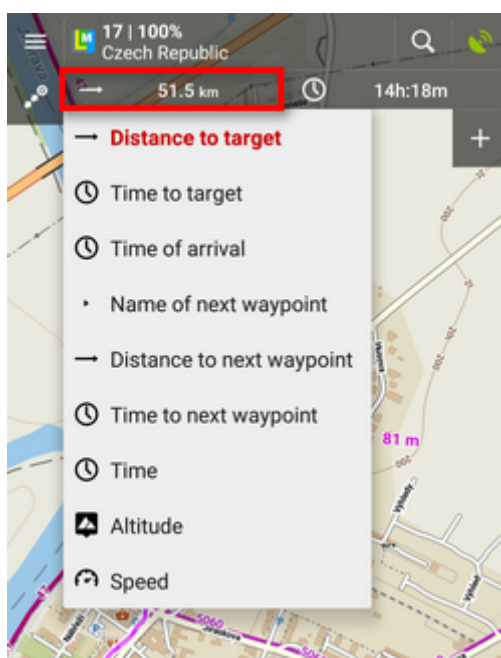
Action menu



- *information* - displays screen with detailed info on the track
- *nearest point* - starts guidance to the nearest point of the route (it does not have to be the starting point)
- *next point* - starts guidance to the next nearest routepoint
- *guide off* - aborts guidance

Information fields

Both can be configured. Tapping them unfolds a menu of features to display:



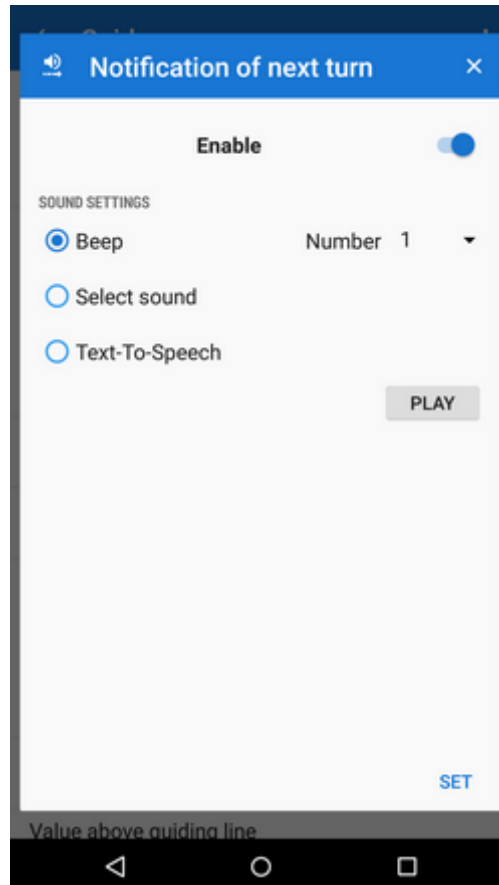
- *Distance to target* (default)
- *Time to target* - estimated time calculated upon your average speed
- *Time of arrival* - estimated arrival time calculated upon your average speed
- *Name of next waypoint* - in case the waypoints are named
- *Distance to next waypoint*
- *Time to next waypoint* - estimated time calculated according to average speed

- *Time* - device clock
- *Altitude* - current altitude of the user, calculated from GPS or the device barometer
- *Speed*

Set notifications of turns

Locus Map can **notify you of direction changes on guided route**. The notifications are rendered automatically based on the **route shape** and do not reflect intersections.

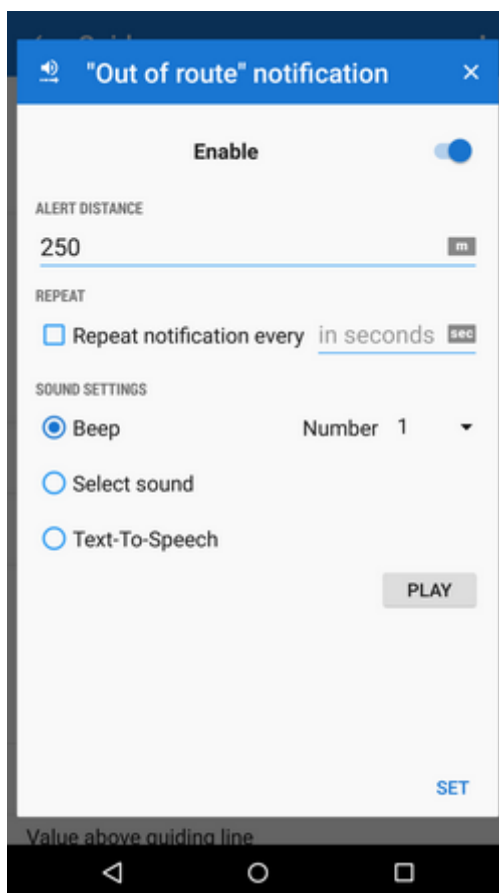
- go to **Menu > Settings > Guidance > Notification of next turn**:



- select **type of alert** - beep(s), custom sounds or Text-To-speech. TTS is very simple, if you need more detailed voice commands, use [Navigation](#).

Set "out of route" notification

Locus Map can **notify you when you leave guided route**. Just set up the **alert distance** and **type of alert**:

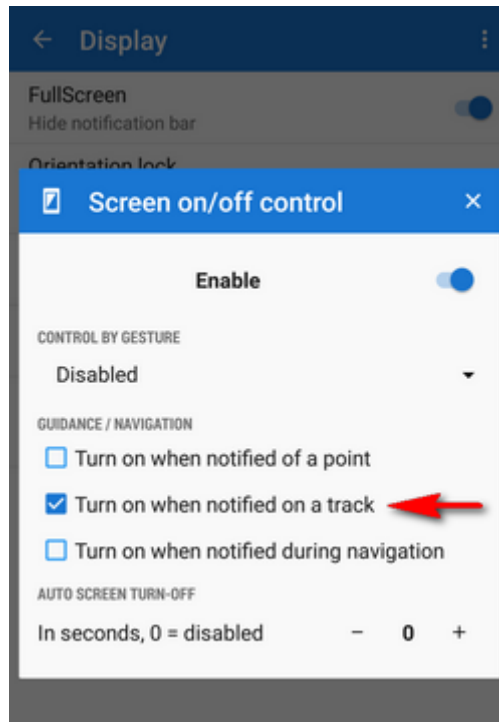


- go to **Menu > Settings > Guidance > “Out of route” notification**
- set alert **distance** and (optionally) **repetition** period
- select **type of alert**. TTS announces distance and direction of the nearest point of the route.

Automatic screen on

To save your battery energy you can set automatic screen switching-on. The screen lights up simultaneously with the sound notification of the route turns.

You can set it up in **Settings > Controlling > Display > Screen on/off control**:



Other settings

Guidance in Locus Map can be further set in **Menu > Settings > Guidance**.

From:

<http://docs.locusmap.eu/> - Locus Map Classic - knowledge base

Permanent link:

http://docs.locusmap.eu/doku.php?id=manual:user_guide:functions:guidance

Last update: **2018/11/30 15:33**

