



## How to place a point of interest on the map?

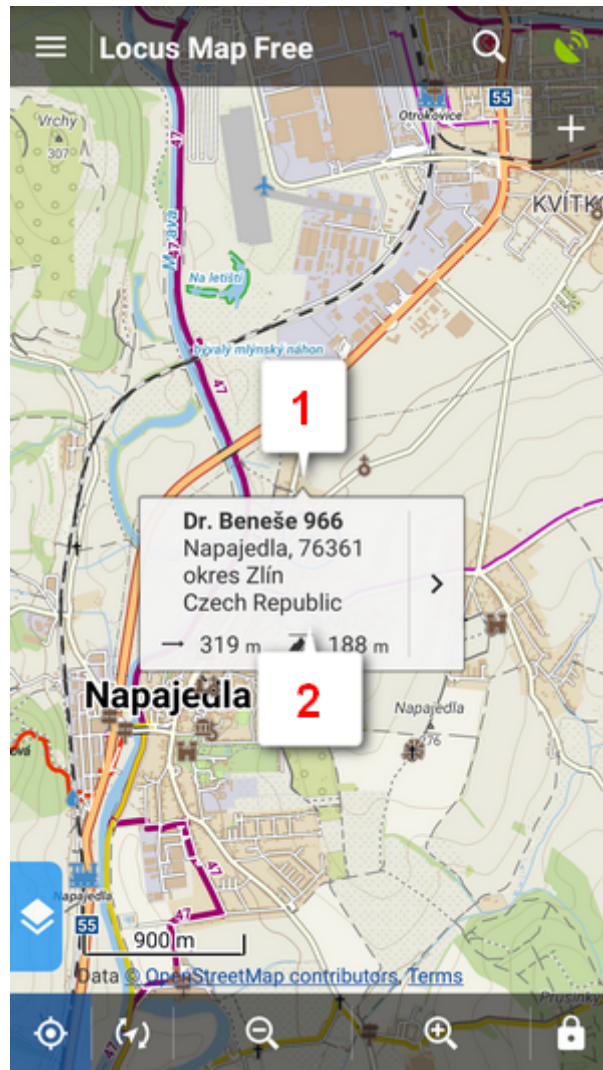
### BTW, what is a point of interest, a.k.a. POI?




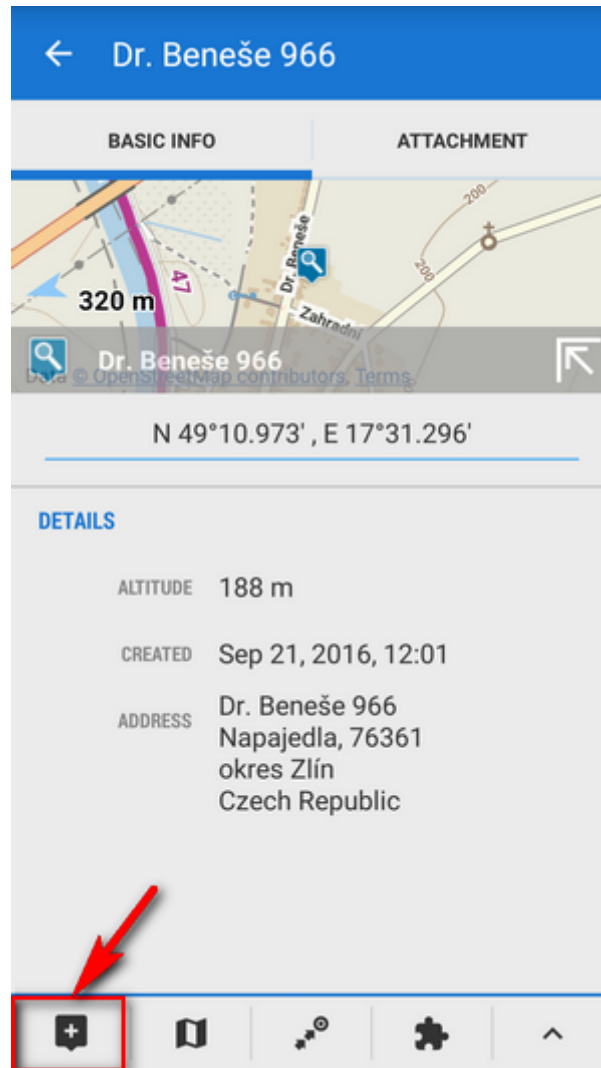
POIs are places on the map that carry some more information you are interested in. **Just tap them.** Usually they describe things like **monuments, theaters, museums, pubs, hotels** etc.

**Locus Map** allows you to place **your own POI** to mark anything you like on your trip, to show your friends your address on holidays or to let yourself navigate to it. It's simple:

- **1.** touch the screen on the place you'd like to save and hold a sec. A small frame with address appears. **2.** tap it once more to open the POI detail window.



- tap  in the left lower corner.



- edit name of your point or just leave what is in the place of name and tap **Save**.

**Edit** ✓ **SAVE** ⋮

**BASIC INFO** | **ATTACHMENT**

**ICON & NAME**  
i Dr. Beneše 966 \*

**FOLDER**  
i various \* 0 / 31

**LOCATION**  
N 49°10.973' , E 17°31.296' \* ⦿

**DESCRIPTION**  
Description \*


**ELEVATION**  
188.087 \* m GET

**ADDRESS**

**STREET**  
Dr. Beneše 966 \* \*

**CITY**

\*all these items can be edited

POIs are listed in the  Points manager.



← Data ⋮		
POINTS	TRACKS	ITEMS
i caches	0 / 409	⋮
i castles	0 / 8	⋮
i photos	0 / 10	⋮
i various	0 / 31	⋮



More about **Points** in Locus Map can be found [here >>](#)

From:

<http://docs.locusmap.eu/> - Locus Map Classic - knowledge base

Permanent link:

<http://docs.locusmap.eu/doku.php?id=manual:basics:poisplace>

Last update: **2020/10/02 16:09**

