

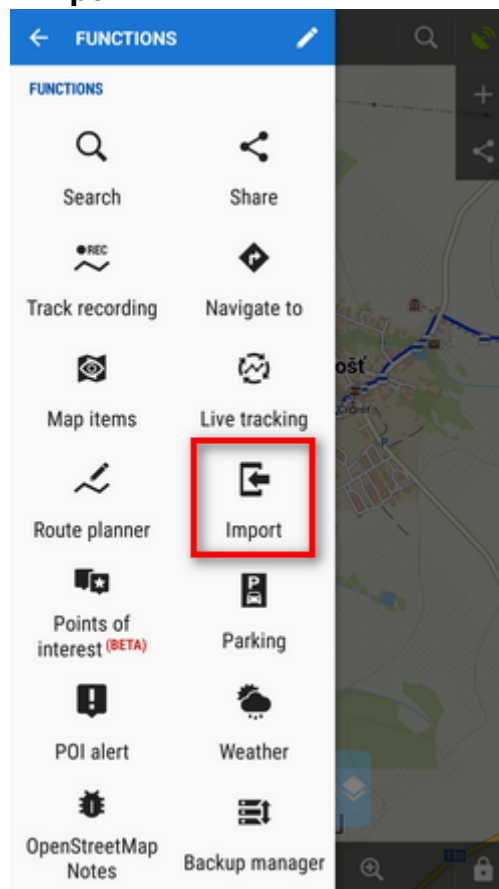
Import

About

Import is used when you want to **work with tracks and/or points from outside of Locus** - websites, apps, add-ons, etc.

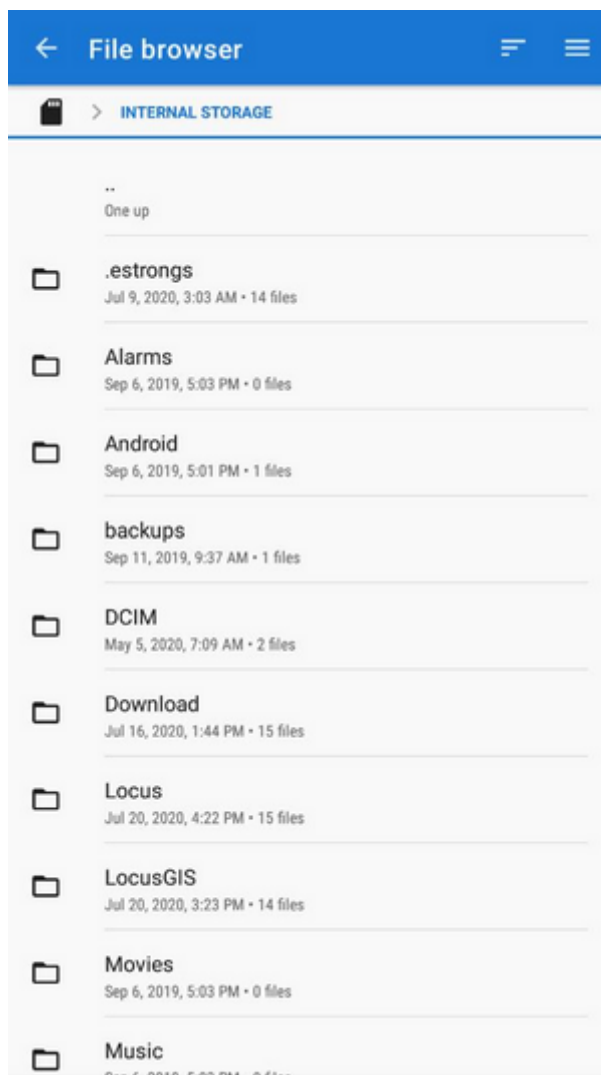
1. Launch import

- Menu > (more functions) > Import



2. Select a file

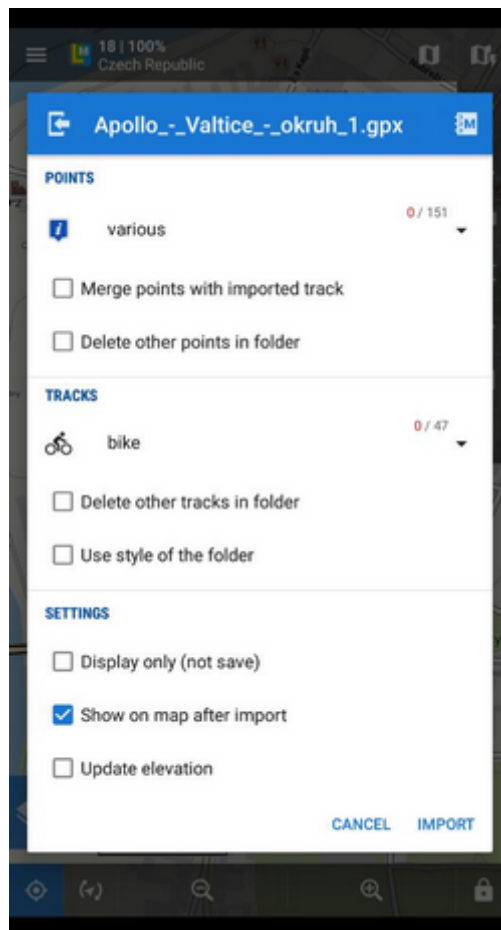
A file manager opens with tabs displaying available drives - **local**, **Dropbox** (if installed), **Google Drive** (if installed) and a field to fill in a URL of a **remote file**. **Importable files are in full color and are clickable**:



- **Local** - directories in your device memory (both internal and external).
- **Dropbox** - contents of your Dropbox. Dropbox login is required when using the tab for the first time.
- **Google Drive** - contents of your Google Drive. Google Drive login is required when using the tab for the first time.
- **Remote file** - a field for inserting a URL of a remote file stored on the internet

3. Set parameters and import

After selecting the file Locus Map analyses it and modifies the import dialog according to the content - the dialog can process points or tracks or both of them at once:



Points

- **Folder selector** - selects the folder into which the points will be imported. It is possible to create a new folder directly from the menu.
- **Merge points with imported track** - adds the points to the track as waypoints (points are not imported to a separate folder)
- **Delete other points in folder** - removes all other points from the selected folder before the import



[More about Points import >>](#)

Tracks

- **Folder selector** - selects the folder into which the file will be imported. It is possible to create a new folder directly from the menu. If you start import from a *folder action menu* in *Tracks manager* it is already pre-selected.
- **Delete other tracks in folder** - removes all other tracks from the selected folder before the import
- **Use style of the folder** - imported track will take color, thickness, pattern etc. defined for the folder it is imported to





[More about Tracks import >>](#)

Settings

- **Display only (not save)** - tracks are just displayed on the map screen - useful for a quick preview of the imported file
- **Show on the map after import** - displays imported tracks on the map when the import is finished
- **Update elevation** - adds or updates the value of imported tracks' elevation (both only if the offline elevation data is available)
- **Cancel** - aborts the action
- **Import** - confirms the action

After pushing the **Import button** the imported points appear in the selected folder of the **Points manager**, respectively tracks in the **Tracks manager**. Depending on whether the option *Display on the map after import* is checked the imported data appear on the map as well.

From:
<http://docs.locusmap.eu/> - Locus Map Classic - knowledge base

Permanent link:
http://docs.locusmap.eu/doku.php?id=manual:user_guide:functions:data_import&rev=1569940970

Last update: 2019/10/01 16:42

