

Convert a picture to sqlite.db



This page is obsolete and will be reworked soon

Basic information

Typ: Tutorial - How to convert scanned maps (jpg, bmp, gif, tif, png)

Author: nervusvagus

Forum link: <http://forum.locusmap.eu/viewtopic.php?f=44&t=2801&p=18446#p18444>

Needed:

- Mapc2Mapc from <http://www.the-thorns.org.uk> (This tutorial is based on V 0.5.0.7)

- Your (scanned) map picture

- Coordinates - needed for calibration (you can use some online services, like [Webservices](#) to see your needed coordinates)

How to

load picture

Start Mapc2Mapc and load your picture:

File ⇒ **Load image for calibration** ⇒ **From Map Coordinates** **[1]**

Map Calibration Settings > select **Latitude / Longitude (plate carree)** > and **WGS 84** > **Next** **[2]**

calibrate image

After this, map file is loaded - ready for calibration.

Choose a point that are easily recognizable on the image map file and find similar place (e.g) in GoogleMaps. Enter the coordinates in the dialog box for entering coordinates.

After doing this 3 to 4 times you can **Click to finish** and the map is calibrated. **[3]**

To adjust the position of a calibration point (red cross), right-click it. **[4]**

Now we are ready to **save...**

create map

File > Write Map for Mobile device [5]

And in the **Mobile Atlas selection** choose under **Select atlas** the option **Locus/RMAPS/Galileo sqlite.db** > **OK** [6]

The **Mobile Atlas Tile Selections** screens will be open now.

Here you can de/activate some white/useless tiles. Un/check your tiles and press **OK** for each zoomlevel [7].

After last zoomlevel the map will begin saving.

The map will be saved as *picturefilename.sqlitedb* file inside the same folder as the picture.

use it in Locus

Copy now your created map to **..Locus/maps/..**

Or you can place this file anywhere in your sdcard on your phone.

In order to access it:

Main menu > Maps > Personal maps and add the directory to be scanned for the map file.

-*nervusvagus*

red crosses

Firstly, suggest to test working demo version if this fits your needs.

The demo version of mapc2mapc will replace some of your map tiles with red crosses:

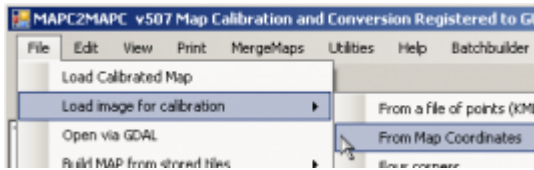


In case you'll be satisfied, I suggest to buy full version.

Thanks to this, Locus Pro user will get 10% discount of this product. [read more..](#)

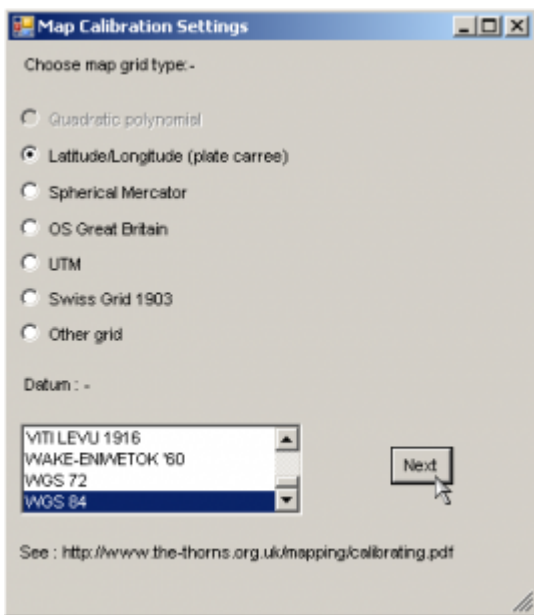
Appendix

[1]



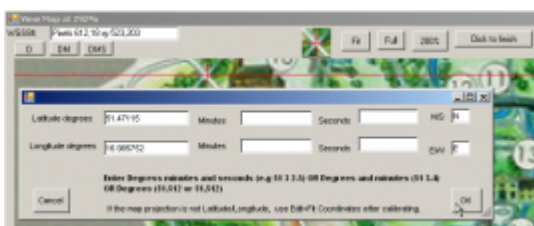
<html>
</html> <=back

[2]



<html>
</html> <=back

[3]



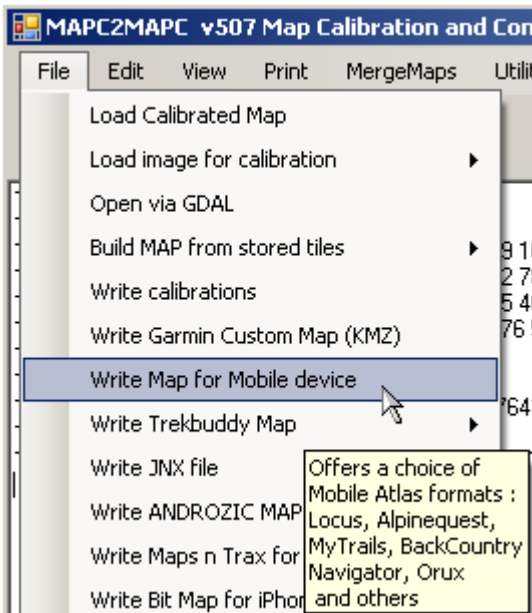
<html>
</html> <=back

[4]



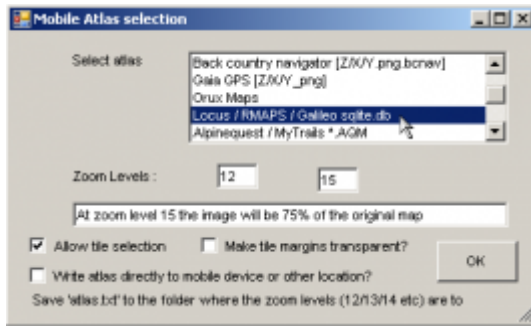
<html>
</html> <=back

[5]



<html>
</html> <=back

[6]



<html>
</html><=back

[7]



<html>
</html><=back

From:
<http://docs.locusmap.eu/> - **Locus Map Classic - knowledge base**

Permanent link:
http://docs.locusmap.eu/doku.php?id=manual:advanced:convert_images_to_sql&rev=1432218550

Last update: **2015/05/21 16:29**

